

Salmon Swim Through It

Save Our Wild Salmon!

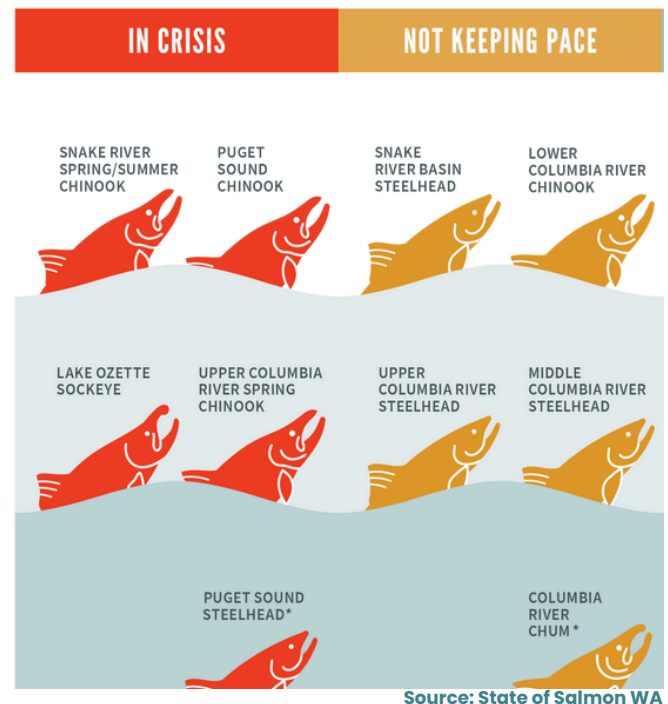


You Can Make A Difference.

So, you think you know about salmon? Look at the illustration. Red means crisis.

Salmon are...

- a keystone species, their loss would result in ecosystem collapse, *not just in rivers*
- integral to our Northwest economy (learn about the [Gift Economy](#))
- a sacred tribal treaty right
- culturally important



What can you do at school?

The best ways to help salmon are by **Expanding Tree Canopy** and **Reducing Stormwater Pollution**. Issaquah wants to expand their tree canopy **55% by 2035** and improve their [stormwater management](#). Help the city reach their goals by using our [Trees on Campus](#) and [Adopt a Drain](#) impact projects to organize a restoration event with your school club, classroom, or a group of friends.



What can you do at home?

Individual actions add up to a big impact. You can make a difference! Follow the Guidelines below to find more ways to protect our salmon and to earn up to **5 community service hours!**

How to get Service Hours



Click on one of our Impact Projects below to get the template. Write up your project, find your stakeholders, follow the procedure, and do the math!



Volunteer For Trees



Plant One Tree in My Yard



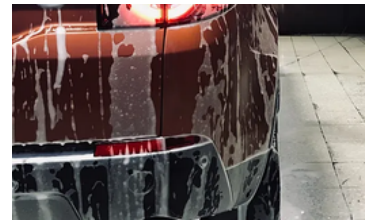
Oldest Tree in My Neighborhood



1 < 3 Storm Drains



Don't Drip and Drive



Use a Commercial Carwash



Now, create an Impact Story about your project's results. Review the requirements and pick a storytelling style from our [Criteria, Storytelling Types & Tips](#).

Need inspo? Watch [Marianna's video](#) on her Adopt a Drain Impact Project.



Submit your data, project write up, and your Impact Story using this [Submission Form](#). If it's good, and meets our criteria for impact, we will accept it. We might even publish the best of the best on our website. **Yep, it's that simple to get 5 community service hours!**



Can I do more than one Impact Project? **Absolutely!** You can find more Impact projects in variety of categories on [our webpage](#).

5+5+5+5+5

Ready to do more? Do some of these Restoration Activities

Help Your City!

Issaquah has a lot of opportunities for you to directly restore damaged salmon habitat. Check out the City's opportunities [here on their calendar](#), and search for more restoration organizations to do your part in expanding our City's tree canopy and restoring habitat for our critically endangered salmon.



Dog Baggie Stations

Dog Baggie Stations!

Dog poop is a serious health issue and environmental issue. Things like [Roundworm](#), [E. Coli](#), and [Giardia](#) can make **you sick, your dog sick**, and **our salmon sick**. Imagine having to swim through that! Use our [Impact Project](#) to explore your neighborhood and inventory current doggie bag stations to determine if you need more.

Shrink Your Lawn for Salmon!

It might seem counterintuitive to remove your lawn, but grass is not good at soaking up stormwater, not to mention all the nasty chemicals and tons of water you need to keep it green. [Shrink your Lawn](#) using our Impact project and replace your space with stormwater filtering native plants. Watch [Marianna's video](#) to learn about why natural yard care is important for our salmon.

