



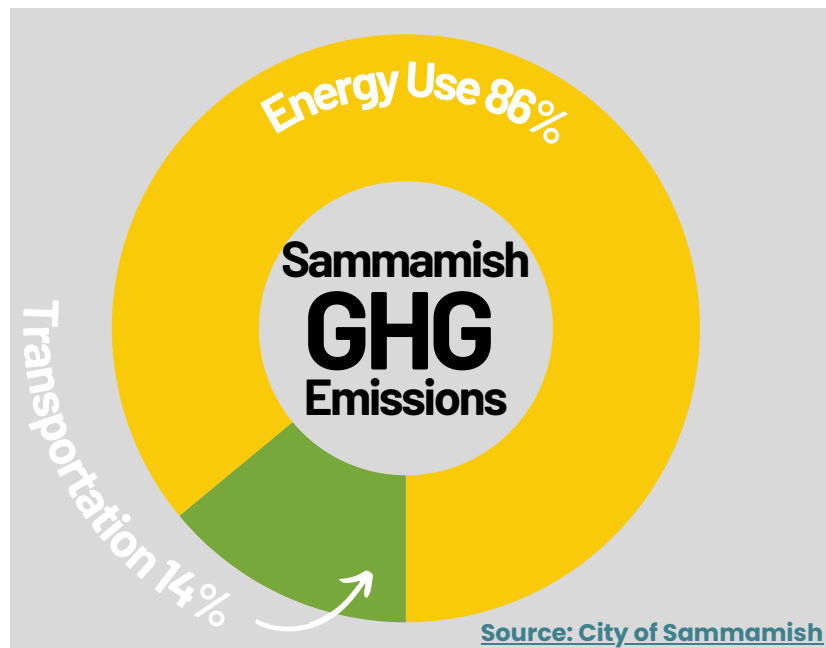
Carbon Commute Counting

It really adds up!

You Can Make A Difference.

We know you've heard all about climate change and greenhouse gases. But, what does that mean in your city?

- Hotter, drier summers
- Worse air quality
- More frequent flooding events
- Shrinking snowpack
- Less drinking water
- Loss of iconic species like *salmon*



What can you do at school?

The **Carbon Commute Count** is a campaign to count up all the carbon produced by commuting to school. Each day **TONS** of carbon are emitted by single-occupancy gas vehicles heading to school, in [Sammamish's Climate Action Plan](#) our goal is to decrease these emissions. Find out how much your school emits using [our toolkit](#) and [campaign](#) and use this baseline data to inspire your peers to take lower-carbon transportation!



What can you do at home?

Individual actions add up to a big impact. Are you one of these drivers? Follow the Guidelines below to find a new transportation method that helps your city tackle climate change and to earn up to

5 community service hours!

How to get Service Hours



Click on one of our Impact Projects below to get the template. Write up your project, find your stakeholders, follow the procedure, and do the math!



How I Carpool to School



Why I Get Around By Bus



I Bike to School

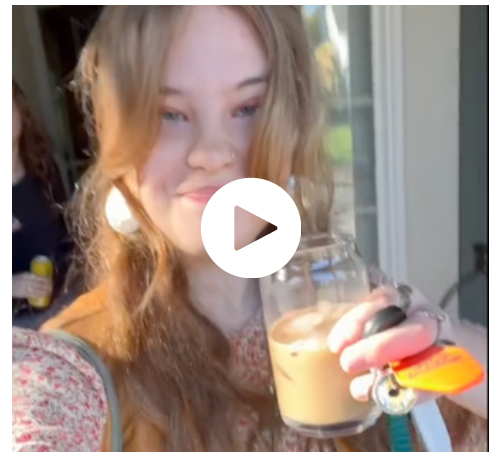


Make Your Bike More You!



Now, create an Impact Story about your project's results. Review [the project requirements](#) and pick a storytelling style from our [Storytelling Types & Tips](#).

Need inspo? Watch [Siena's video](#) on her Carpool to School Impact Project.



Submit your data, project write up, and your Impact Story using this [Submission Form](#). If it's good, and meets our criteria for impact, we will accept it. We might even publish the best of the best on our website. **Yep, it's that simple to get 5 community service hours!**



Can I do more than one Impact Project? **Absolutely!** You can find more Impact projects in variety of categories on [our webpage](#).

5+5+5+5+5

Ready to do more? Implement some of these Zero Carbon Commute Strategies

There are a lot of things you can do to lower your commute's emissions! You have to get to school somehow, try one of these strategies below:

Play Bus Bingo!

Public transit is a great way to get to know your city while getting around in an environmentally friendly way. Use our [Bus Bingo Hub](#) to gamify your next bus ride! You can play by yourself, challenge a group of friends, or even get a competition going at your school. Learn how to play from [Belle and Eva!](#)



Go Electric!

One way to ensure your commute is zero-carbon is by investing in an electric vehicle! The market for this technology is continually growing, check out if an EV is a good fit for your family using our Impact Project [Can My Family Buy an EV?](#)